



METAMIX

KBL MetaMix Lab Mixer

The revolutionary KBL MetaMix laboratory mixer represents the ideal solution for blending small quantities of powders (and liquids) with the utmost precision and accuracy, providing the user with an all-in-one, plug'n'play unit, available both in desktop version and on castors. Completely built in 316L SS, the mixing drum can be fitted with three different types of shafts and mixing tools (ploughs, blades or ribbon), quickly and easily interchangeable, providing the perfect blending solution to a wide variety of applications. With its stylish design, a sophisticated PLC, a main drive inverter and a last generation smart tablet (that can be connected via cable or WLAN) this unit can be fully controlled, even from remote. The MetaMix can be used in manual and automatic mode, manages and stores recipes, and fully complies with 21 CFR part 11 requirements.

A wide range of accessories completes the KBL MetaMix, enabling the user to choose the best-suited configuration: completely food-grade refiner, liquid injection system, temperature jacket with thermocouple, loading hopper with filter, discharge container, integrated weighing system. The new KBL MetaMix: your laboratory's ideal mixing partner whenever flexibility, hygiene and precision are non-negotiable requisites.



*guaranteed batch
repeatability*



quiet



smart & connected



*quick and easy
sanitization*



*guaranteed
scale-up*

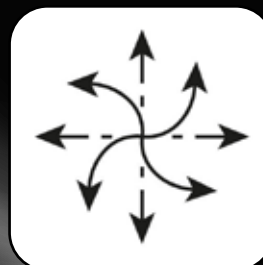
Benefits



precise & accurate

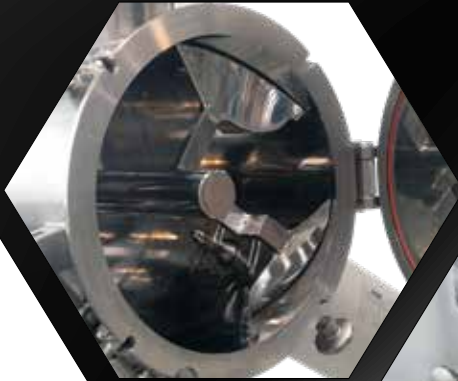


*unbelievable
particle distribution*



flexible and versatile

316SS mirror polishing



XXL castors



FDA approved



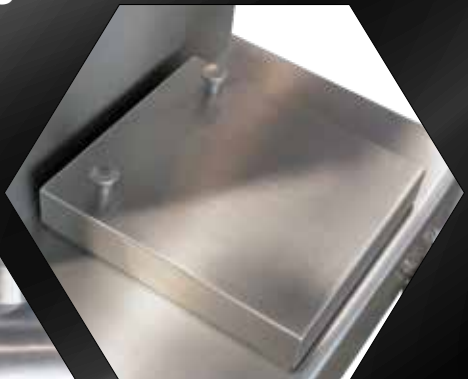
Key Attributes



safety interlock



high-tech tablet/controls



load cell

KBL MetaMix: exceeding expectations

Industrial Sectors



baby foods



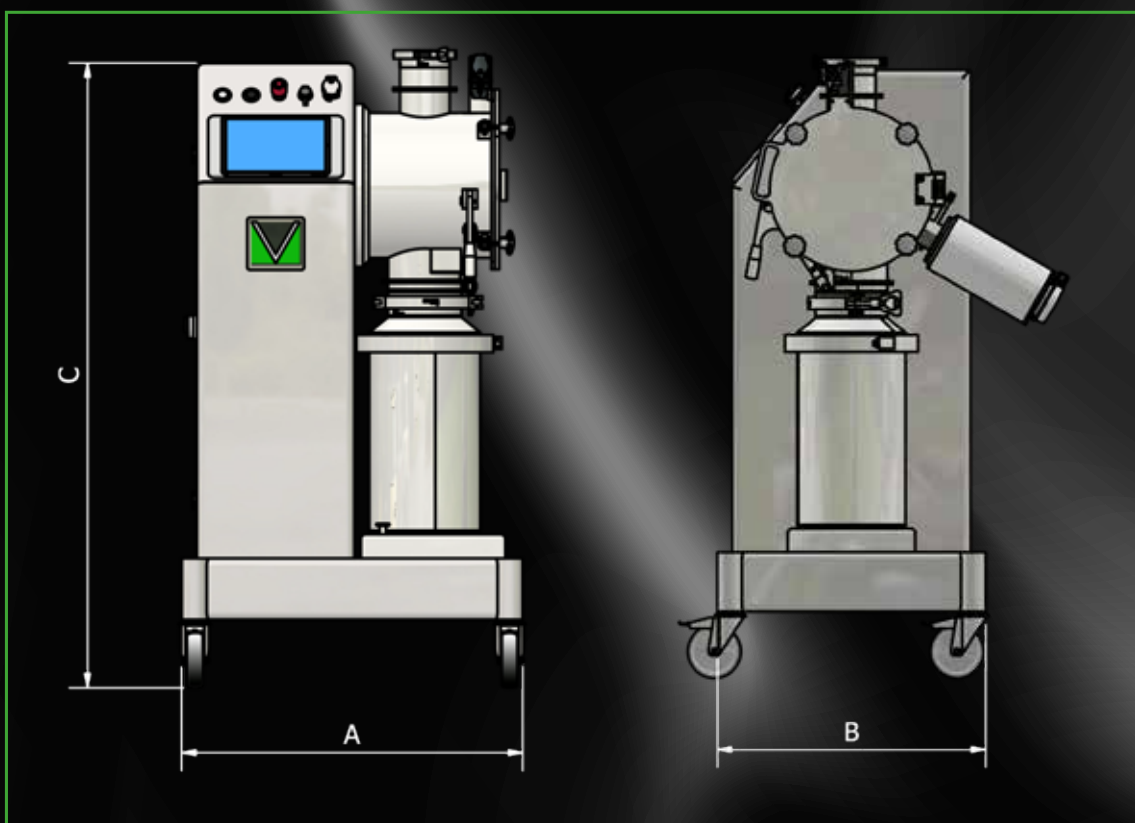
pharmaceuticals



chemicals



cosmetics



Mixer Model	Min. Useful Vol (l)	Max. Useful Vol. (l)	A (mm)	B (mm)	C (mm)	Installed Power (kW)
KBL-10-D	2,60	7,70	1080	630	630	1,5
KBL-10-C	2,60	7,70	780	630	1430	1,5
KBL-25-C	5,80	17,70	780	630	1430	1,5

METAMIX

exceeding expectations



MC² Srl
via S. Domenico, 7
40124 Bologna (BO) Italy
T. +39 051 4683268

E. info@mc2-srl.com
W. www.mc2-srl.com

KBL01 GB FEB 25

